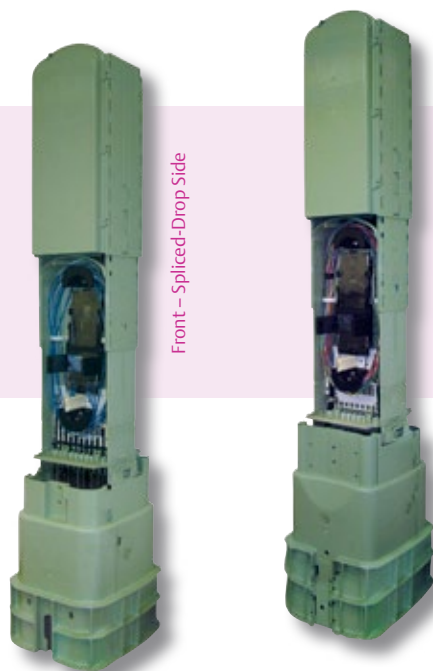


Distribution Enclosures for Fiber Optic Applications





Emerson offers a comprehensive line of NetSpan™ Integrated Solutions pre-configured for FTTx deployment.



*NetSpan™ FDP Series
Integrated Fiber Distribution Pedestal Solution*



*NetSpan™ FDH Series
Integrated Fiber Distribution Hub Solution*

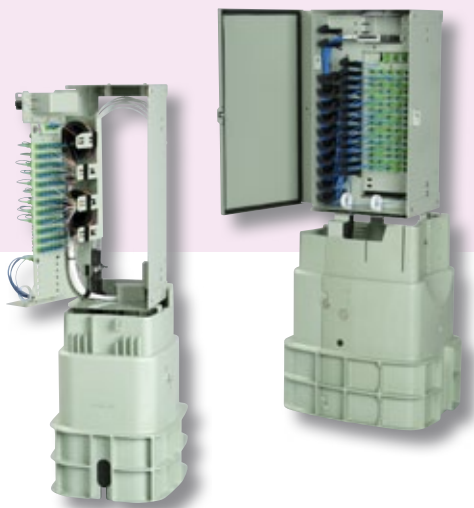
■ NetSpan™ FDP Series

The NetSpan™ FDP series of optical splice and distribution products permits fiber splicing and improves cable organization. A separate, factory pre-configured, Fiber Distribution Closure (FDC) mounts inside a nonmetallic ProFORM® pedestal to form this unique integrated fiber distribution solution.

Craft separation for fiber routing is accomplished with the FDC. This closure is mounted back-to-back or single-sided in an 8 or 10-in. ProFORM® pedestal, permitting simplified optical splicing and terminated drops. Open, closed or open/closed FDC configurations are available.

■ NetSpan™ FDH Series

The NetSpan™ FDH series of enclosures provides connections between fiber optic cables and passive optical splitters in the outside plant environment and is ideal as a Local Convergence Point (LCP) for aggregation in a centralized splitting Passive Optical Network (PON) FTTx architecture.



*NetSpan™ FDH Compact Series
Integrated Fiber Distribution Hub Solution*

Catalog No. Part No. Description

NetSpan™ FDP Series

NSFDP8XSO1	F1008107	Integrated PRO8, 1 side open splice with splice tray
NSFDP8SCSCX	F1008151	Integrated PRO8, 2 side closed splice
NSFDP8SO2OX	F1008109	Integrated PRO8, open splice, open 4-port OptiTap adapter
NSFDP8SC4CX	F1008113	Integrated PRO8, closed splice, closed 6-port OptiTap adapter
NSFDP10XSCX	F1008116	Integrated PRO10, 1 side closed splice
NSFDP10SCSC1	F1008146	Integrated PRO10, 2 side closed splice with splice tray
NSFDP10SO6OX	F1008121	Integrated PRO10, open splice, open 6-port OptiTap adapter
NSFDP10SC8CX	F1008126	Integrated PRO10, closed splice, closed 8-port OptiTap adapter
NSFDC8XSOX	F1008306	FDC fits PRO8, 1 side open splice
NSFDC8SCSC1	F1008339	FDC fits PRO8, 2 side closed splice with splice tray
NSFDC8SC6CX	F1008322	FDC fits PRO8, closed splice, closed 6-port OptiTap adapter
NSFDC10SCSC1	F1008355	FDC fits PRO10, 2 side closed splice with splice tray
NSFDC10SO8OX	F1008275	FDC fits PRO10, open splice, open 8-port OptiTap adapter

NetSpan™ FDH Series

NSFDH144AX100D1	F1008136	144 FDH 100' dielectric loose tube, SC/APC, pad mtg.
NSFDH288AX100A1	F1008139	288 FDH 100' armored loose tube, SC/APC, pad mtg.
NSFDH432AX100D1	F1008140	432 FDH 100' dielectric loose tube, SC/APC, pad mtg.
NSFDH576AX100A1	F1008143	576 FDH 100' armored loose tube, SC/APC, pad mtg.
NSSPLT132AA	F1008236	1X32 splitter module, SC/APC for 144/288 FDH
NSSPLT132AB	F1008144	1X32 splitter module, SC/APC for 432/576 FDH

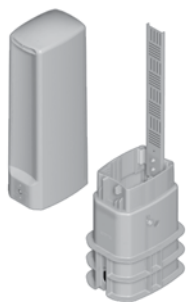
NetSpan™ FDH Compact Series

NSFDH1072A1X100D	F1008640	PRO10, 72 FDH 100' dielectric loose tube, SC/APC, (1) splitter included
NSFDH1296AXX100D	F1008493	PRO12, 96 FDH 100' dielectric loose tube, SC/APC, no splitter
NSFDH12144A1X100D	F1008641	PRO12, 144 FDH 100' dielectric loose tube, SC/APC, (1) splitter included
NSSPLT132AD	F1008495	1X32 splitter module, SC/APC for PRO10 FDH
NSSPLT132AE	F1008496	1X32 splitter module, SC/APC for PRO12 FDH

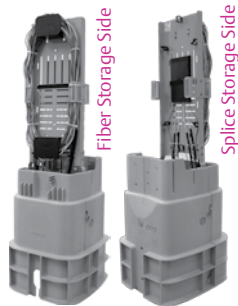
NOTE: Other configurations available. See individual product brochures or call customer service for more information.

Emerson Network Power —
a complete spectrum of best-in-class reliable
power, precision environmental and connectiv-
ity solutions for today's telecommunications
and data network infrastructure

Our diverse line of pedestals can be used in a wide variety
of fiber optic applications.



**ProFORM®
URB Series**



**ProFORM®
FDP MI Series**



**ProFORM®
Vault Series**



**UPCBD Bracket
for Fiber Deployment**



**OPFO Series
Splice Closures**



*Nonmetallic and metallic
versions available.*

■ **ProFORM® URB Series**

The nonmetallic ProFORM® with URB for mounting fiber terminal blocks is an above ground pedestal. Integral spade and self-supporting short base versions available.

■ **ProFORM® FDP MI Series**

8", 10" and 12" non-metallic pedestals configured for a wide variety of fiber deployment. Front allows for fiber storage of up to 12 feet of 144 loose tube fiber. Rear accommodates up to 6 splice trays.

■ **ProFORM® Vault Series**

The ProFORM® Vault Pedestal is a 10" pedestal that mounts to an industry standard vault lid cutout, providing accessibility for a variety of applications.

■ **UPCBD Fiber Optic Kit**

Converts any standard UPCBD4 or UPCBD5 pedestal into a fiber distribution terminal. The BDFOKIT will accept up to 6 splice trays and bulk fiber storage.

■ **OPFO Series Splice Closures**

Large capacity weather-resistant cabinets designed to protect fiber optic splices in both buried and aerial distribution systems.



Applications range from ground shield fault and location, to pedestal distribution and storage of fiber.

Catalog No.	Part No.	Description
ProFORM® URB Series		
PRO6FINGURB	F1007872	6" pedestal, integral spade split base w/URB
PRO6FSNGURB	F1007873	6" pedestal, short self-supporting split base w/URB
PRO8FINGURB	F1006245	8" pedestal, integral spade split base w/URB
PRO8FSNGURB	F1006243	8" pedestal, short self-supporting split base w/URB
PRO10FINGURB	F1006246	10" pedestal, integral spade split base w/URB
PRO10FSNGURB	F1006244	10" pedestal, short self-supporting split base w/URB
PRO12FINGURB	F1006857	12" pedestal, integral spade split base w/URB
PRO12FSNGURB	F1006856	12" pedestal, short self-supporting split base w/URB
URBKIT	F1006936	URB upgrade kit for ProFORM® pedestals
ProFORM® FDP MI Series		
PRO8FING	F1007237	8" integral spade fiber distribution pedestal
PRO8FSNG	F1007238	8" short self-supporting split base fiber distribution pedestal
PRO8FMPLT	F1007331	Fiber mounting plate for 8" ProFORM® pedestals
PRO10FING	F1007239	10" integral spade fiber distribution pedestal
PRO10FSNG	F1007240	10" short self-supporting split base fiber distribution pedestal
PRO10FMPLT	F1007168	Fiber mounting plate for 10" ProFORM® pedestals
PRO12FING	F1007689	12" integral spade fiber distribution pedestal
PRO12FSNG	F1007680	12" short self-supporting split base fiber distribution pedestal
PRO12FMPLT	F1007801	Fiber mounting plate for 12" ProFORM® pedestals
ProFORM® Vault Series		
PRO10NFVP	F1007069	ProFORM® 10" fiber vault pedestal with URB bracket
PRO10NFMVP	F1007628	ProFORM® 10" fiber vault pedestal with fiber mounting plate
PRO10NMVP	F1007776	ProFORM® 10" fiber vault pedestal with plastic center mounting plate
PRO10NEVP	F1008255	ProFORM® 10" fiber vault pedestal, empty
UPCBD Fiber Optic Kit		
BDFOKIT	F1007373	Upgrade bracket for BD4 & 5 fiber deployment
OPFO Series Splice Closures		
OPFOBD7	F112503	24" x 11" fiber splice closure cabinet, pad mount
OPFOBD7PL	F112538	24" x 11" fiber splice closure cabinet, pole mount
UPC1850F1	F1007415	32" x 18" fiber splice closure cabinet, pad mount

Emerson (NYSE: EMR), based in St. Louis, Missouri (USA), is a global leader in bringing technology and engineering together to provide innovative solutions to customers through its network power, process management, industrial automation, climate technologies, and appliance and tools businesses. For more information, visit: Emerson.com.

Emerson Network Power, a business of Emerson (NYSE:EMR), is the global leader in enabling *Business-Critical Continuity*[™] from grid to chip for telecommunication networks, data centers, health care and industrial facilities. Emerson Network Power provides innovative solutions and expertise in areas including AC and DC power and precision cooling systems, embedded computing and power, integrated racks and enclosures, power switching and controls, monitoring, and connectivity. All solutions are supported globally by local Emerson Network Power service technicians. For more information on Emerson Network Power's full suite of solutions specifically supporting the communications network infrastructure, including NetSpan[™], NetReach[™] and NetXtend[™] outside plant enclosures and equipment, NetSure[®] DC power systems, and turnkey services, visit: EmersonNetworkPower.com/EnergySystems.

Learn more about Emerson Network Power products and services at: EmersonNetworkPower.com.

This publication is issued to provide outline information only which (unless agreed by Emerson Network Power Energy Systems, North America, Inc. in writing) may not be used, applied or reproduced for any purpose or form part of any order or contract or be regarded as a representation relating to the products or services concerned. Emerson Network Power Energy Systems, North America, Inc. reserves the right to alter without notice the specification, design or conditions of supply of any product or service.

Emerson[®], Emerson Network Power[™], Business-Critical Continuity[™], NetSpan[™], NetReach[™], NetXtend[™] and NetSure[®] are trademarks of Emerson Electric Co. and/or one of its subsidiaries.

Emerson Network Power

Energy Systems, World Headquarters

4350 Weaver Parkway, Warrenville, IL 60555 USA

Toll Free: 800-800-1280 (USA and Canada)

Telephone: 440-246-6999 **Fax:** 440-246-4876

Web: EmersonNetworkPower.com/EnergySystems

Emerson Network Power.

The global leader in enabling *Business-Critical Continuity*[™].

- | | | | |
|----------------|--|------------------------------|-------------------------------|
| ■ AC Power | ■ Embedded Computing | ■ Outside Plant | ■ Racks & Integrated Cabinets |
| ■ Connectivity | ■ Embedded Power | ■ Power Switching & Controls | ■ Services |
| ■ DC Power | ■ Infrastructure Management & Monitoring | ■ Precision Cooling | ■ Surge Protection |