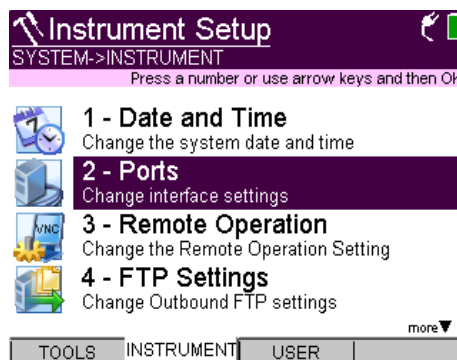


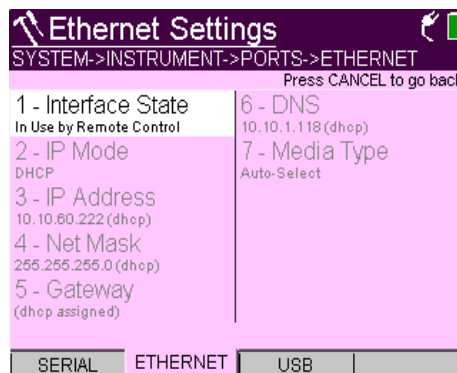
## HST3000 Remote Operation

### Configuring the HST3000

1. After HST3000 has powered on, press the System navigation button.
2. In the System menu press the soft key under Instrument.



3. Press # 2 on keypad to enter into the Ports selection.
4. Press the soft key under Ethernet.



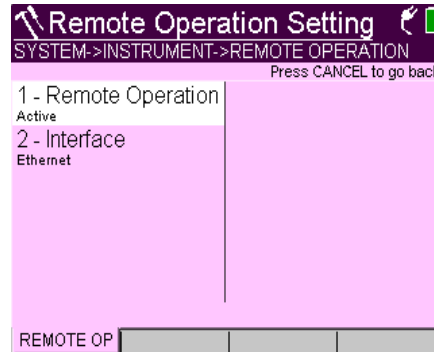
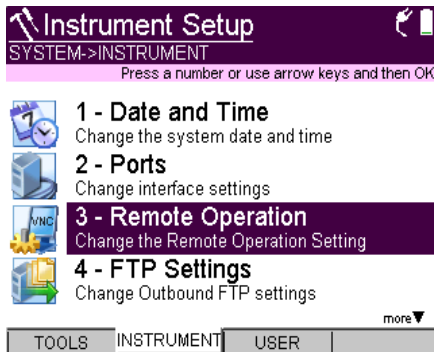
5. If connected to LAN, press # 2 IP MODE and set to DHCP. IP address should automatically be pulled in field # 3.

If connected directly to PC with crossover cable, leave # 2 IP MODE set for Static.

IP Address # 3 set to 192.168.0.2  
Net Mask # 4 set to 255.255.255.0  
Gateway # 5 set to 192.168.0.1.



6. Press Cancel to exit Ports Settings
7. Press # 3 on key pad to enter Remote Operation. Ensure Interface # 2 is set for Ethernet and set # 1 Remote Operation to Active.



8. HST3000 will display "Remote Operation Enabled" and the IP address to connect with VNC viewer.
9. Connect PC to LAN with straight through cable or directly to the HST3000 with a crossover cable.

## Configuring the PC

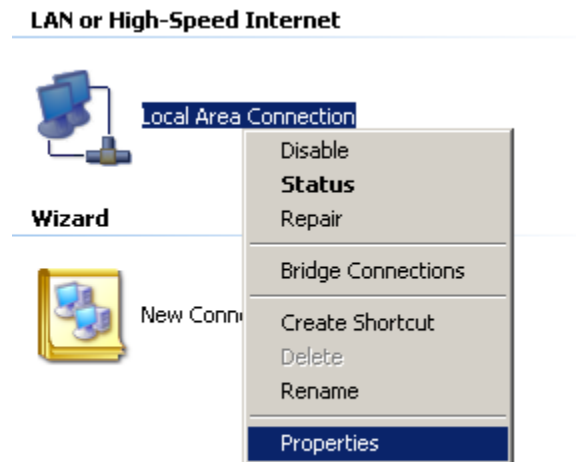
**LAN Connection skip to step 16.**

**Direct Connection continue with step 10.**

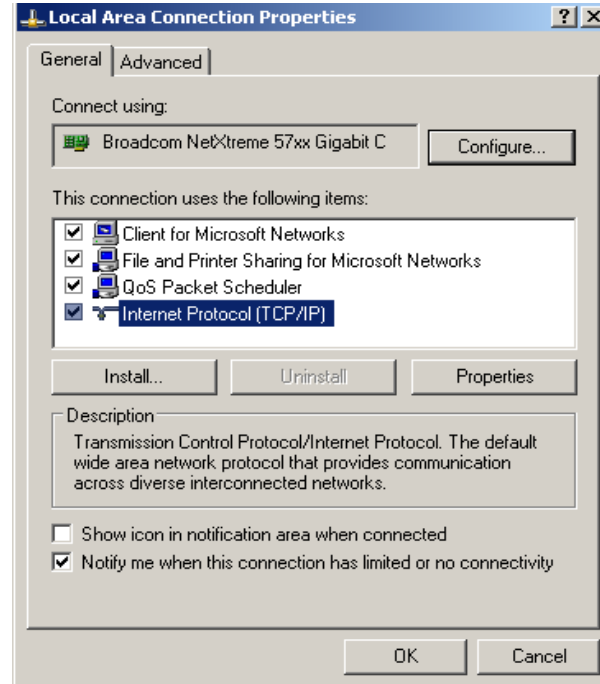
10. With PC powered on, access the PC's Control Panel.
11. In the Control Panel window, double click on the Network Connections icon.



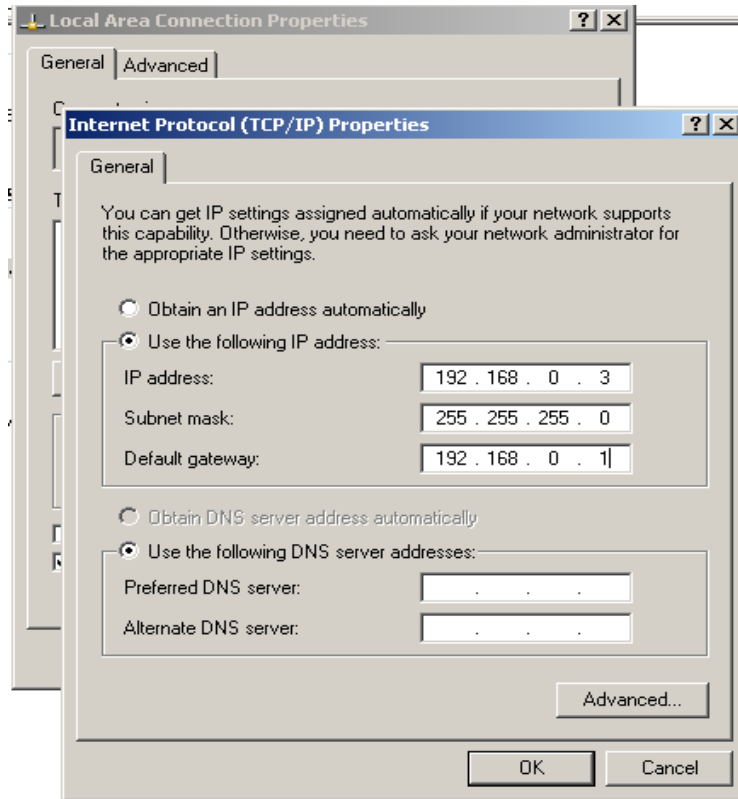
12. In the Network Connections window, perform a **right** click on the Local Area Network connection icon and click on Properties in the pop-up box.



13. In the Local Area Connection Properties box, highlight the "Internet Protocol (TCP/IP)" selection and then click on Properties.



- Change the radial selection to “Use the following IP address:”

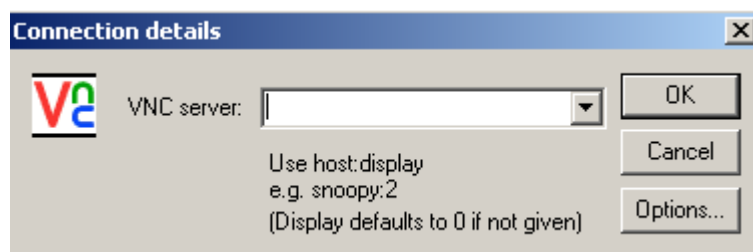


- Set the PC's IP address as 192.168.0.3  
Subnet mask as 255.255.255.0  
Default gateway as 192.168.0.1

Click on OK and close all windows.

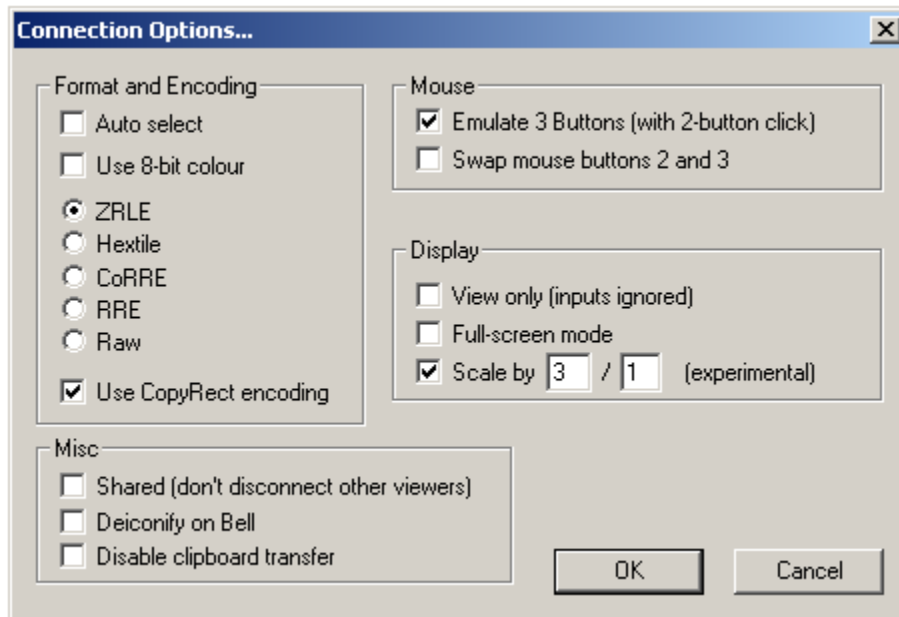
### Connecting to HST3000

- Launch VNC viewer software. (Rev 3.3.7.0 recommended). Click on Options.





17. In the Connection Options box, place a check in the box next to “Scale by” and set the scale to **3 / 1** and press OK.



18. Insert the IP address displayed in the HST3000's window from Step # 8 and click on OK to bring up HST3000's GUI.

